

H2 2 BEDROOM HOME

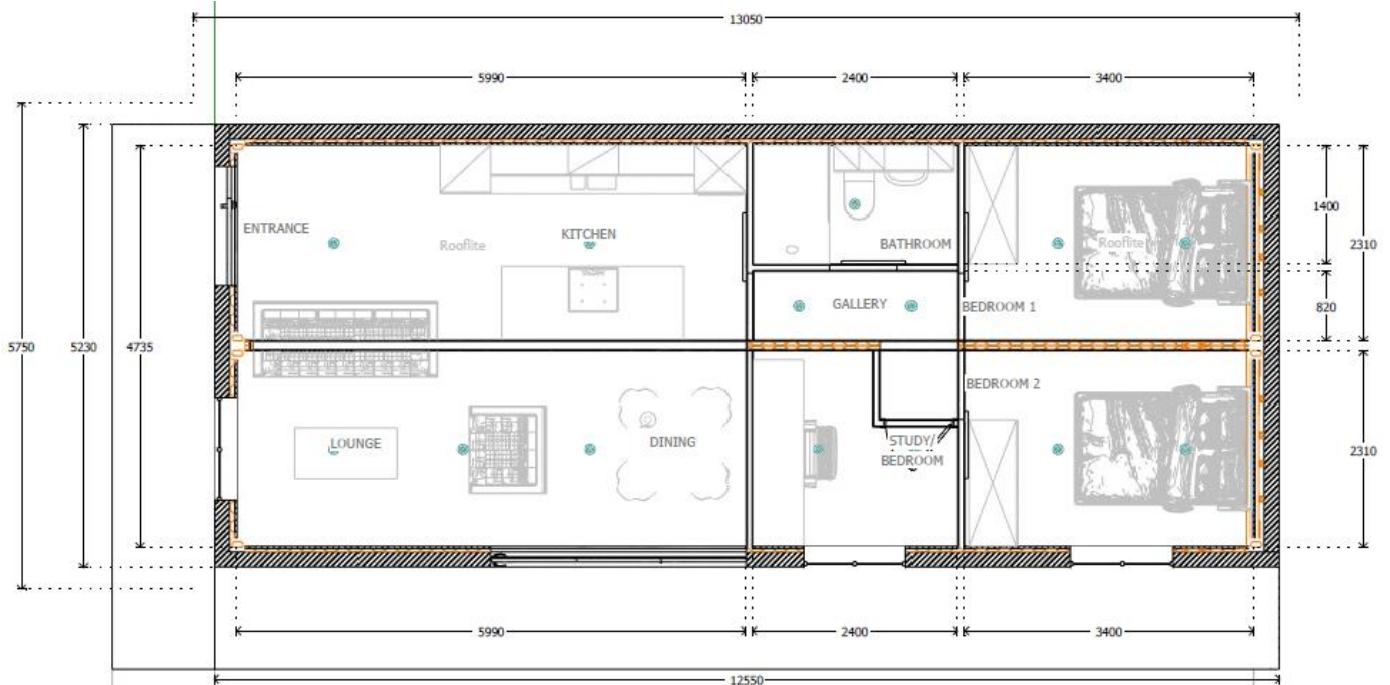


The perfect choice for a first time buyer, offering a truly affordable way to build their very own first home, or ideal as a downsizing option for those seeking a simpler lifestyle. The H2 features plenty of living space with a modern open plan feel.

- A spacious two bedroom home featuring open-plan kitchen, living and dining area and full height glazed doors
- Fully fitted kitchen with integrated appliances and on-demand hot water tap
- Two double bedrooms with built in wardrobes
- Spacious bathroom with fully fitted furniture, walk-in shower with electric shower, and modern WC and wash basin

Price from: £75,000

H2 2 BEDROOM HOME



What's included as standard?

Double glazed doors and windows positions are recommended locations.

Kitchen, bathroom and wardrobe designs are included as recommended.

Internal walls and ceilings are painted white, and carpet or linoleum floor coverings are included as standard.

External walls are clad with self coloured maintenance free 'VIVIX' rainwater panelling.

Appliances, showers and hot water supplies are electric, and all standard light fittings are recessed LED spotlights.

Solar panels, rainwater harvesting and septic waste are available as upgrade options.

All dimensions, colours and finishes shown are illustrative, and are to be used for guidance only.